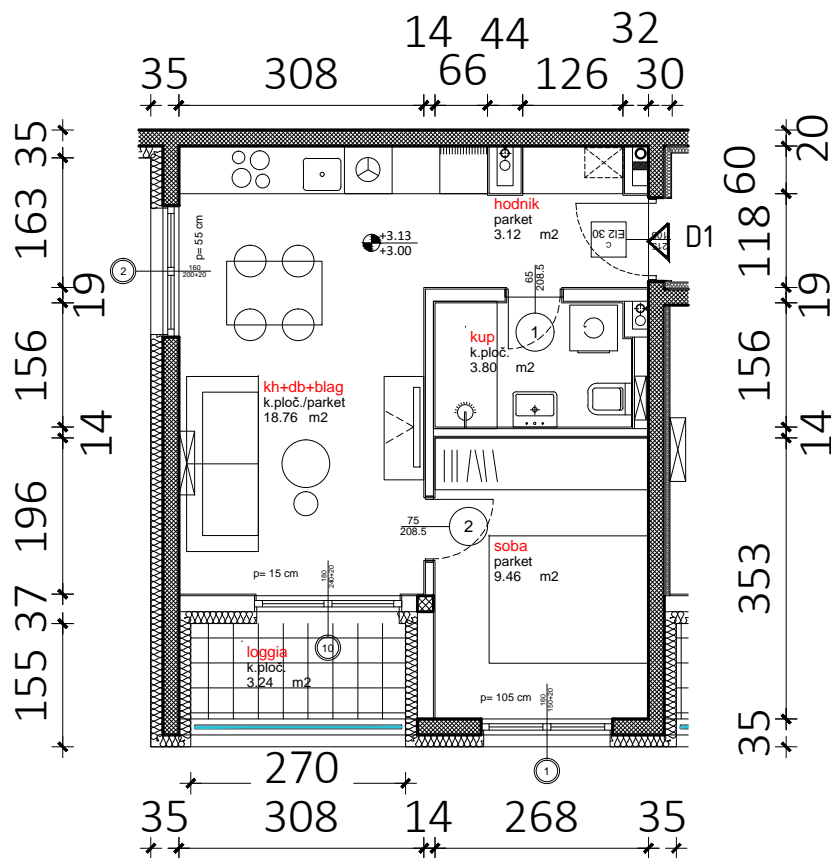
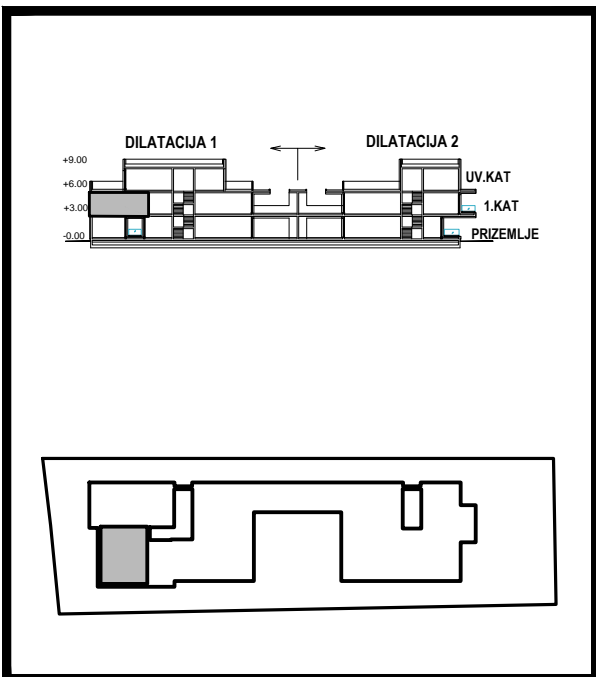


D1 - 1.KAT			
STAN D1	netto-površina ( m <sup>2</sup> )	k	netto-obr.površina ( m <sup>2</sup> )
Hodnik	3,12	1,00	3,12
KP	3,80	1,00	3,80
Soba	9,46	1,00	9,46
DB+BL+KH	18,76	1,00	18,76
<b>UKUPNO</b>	<b>35,14</b>		<b>35,14</b>
Loggia	3,24	0,75	2,43
<b>STAN D1 UKUPNO</b>	<b>38,38</b>		<b>37,57</b>



D1

D1