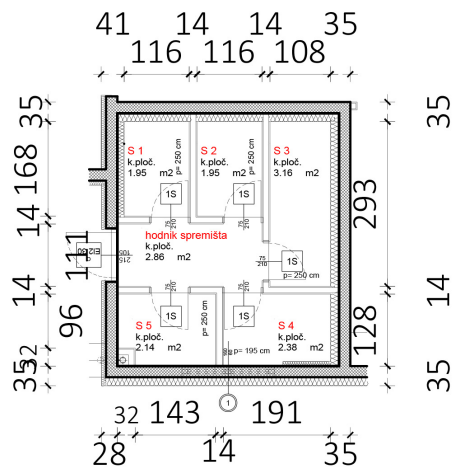
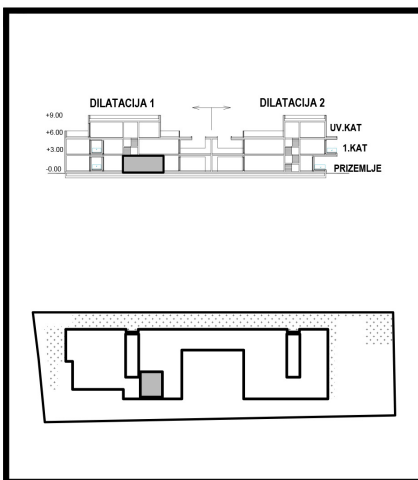


PRIZEMLJE SPREMIŠTA D1			
SPREMIŠTA D1	netto-površina (m <sup>2</sup> )	k	netto-obr.površina (m <sup>2</sup> )
Spremište 1	1,95	0,75	1,46
Spremište 2	4,42	0,75	3,31
Spremište 3	3,16	0,75	2,37
Spremište 4	2,38	0,75	1,78
Spremište 5	2,14	0,75	1,60
<b>PRIZEMLJE SPREMIŠTA D1 UKUPNO</b>	<b>14,05</b>		<b>10,52</b>



D1  
SPR.